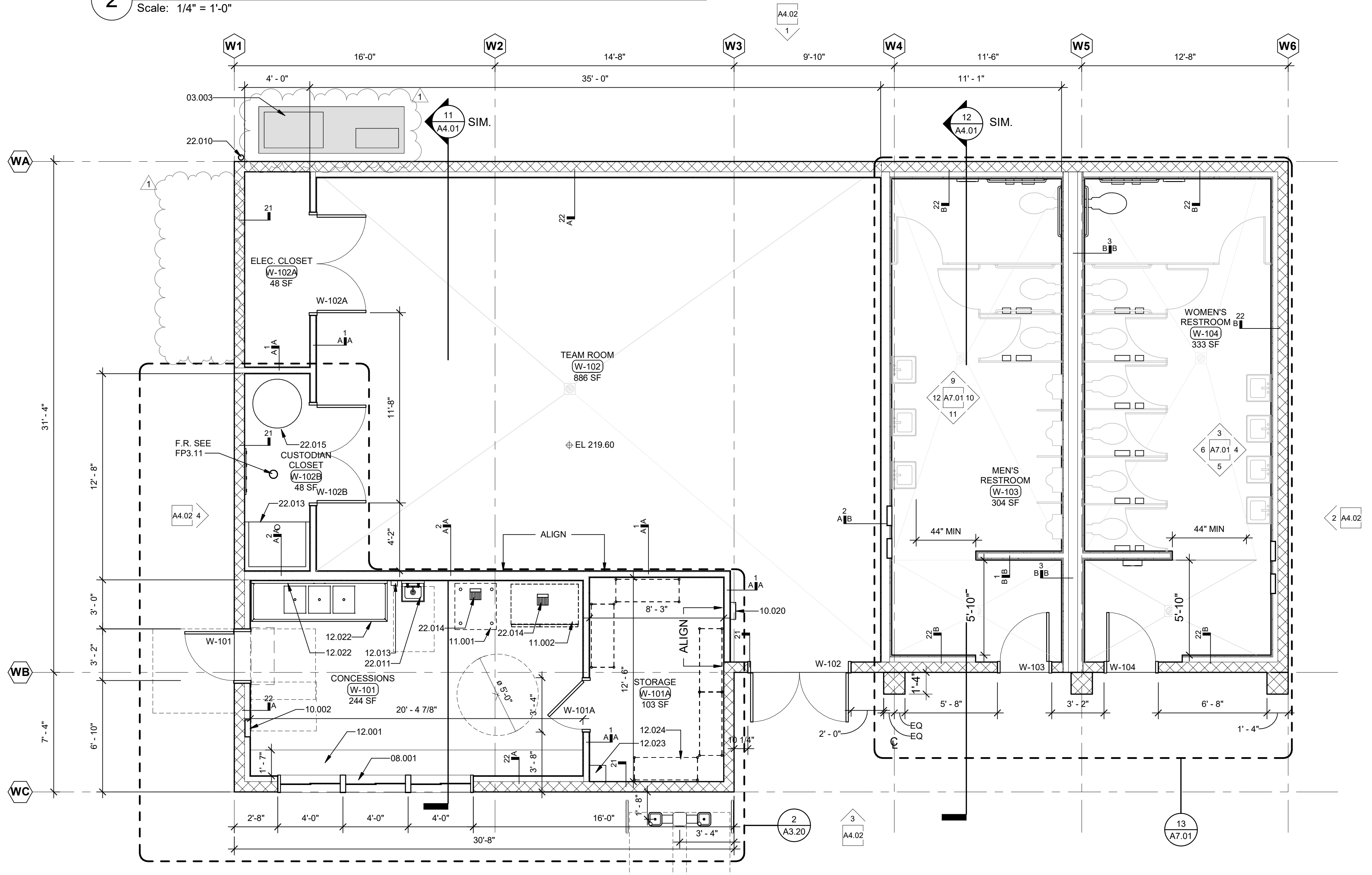


2 BUILDING W - VISITOR FIELD HOUSE REFLECTED CEILING PLAN
Scale: 1/4" = 1'-0"



1 BUILDING W - VISITOR FIELD HOUSE FLOOR PLAN
Scale: 1/4" = 1'-0"

KEYNOTE LEGEND	
KEYNOTE	NOTE
03.003	ELEVATED CONCRETE PAD, SEE M8.01 SEE 1/S1.02
08.001	WINDOW, SEE WINDOW SCHEDULE, TYP.
08.002	LOCKABLE ACCESS PANEL, TYP.
10.002	RECESSED FIRE EXTINGUISHER CABINET, SEE 3/A5.07
10.020	SURFACE MOUNTED FIRE EXTINGUISHER CABINET, SEE 8/A5.06
11.001	ICE MACHINE (OFCI)
11.002	REFRIGERATOR (OFCI)
12.001	STAINLESS STEEL COUNTERTOP, TYP.
12.013	LIQUID SOAP DISPENSER, TYP.
12.022	6" SPLASH GUARD
12.023	EMPLOYEE LOCKER
12.024	METAL SHELVING EQUIPMENT ON 6" HIGH LEGS
22.010	3" METAL DOWNSPOUT 18GA, SEE P7.03 FOR SIZE
22.011	SINK, TYP.
22.013	MOP SINK
22.014	FLOOR SINK, TYP.
22.015	WATER HEATER, SEE PLUMBING DRAWINGS
26.004	6" LED RECESSED DOWN LIGHT WITH DIE-FORMED HOUSING, SEE E0.03 & E7.01
26.005	PENDANT LIGHT FIXTURE, TYP., SEE A/E3.03

FLOOR PLAN LEGEND	
NOTE: NOT ALL TYPES MAY BE USED	
	60" WHEELCHAIR TURNING CIRCLE
	ACCESSIBLE LAVATORY
	DOOR ADA CLEARANCES
	DRINKING FOUNTAIN
	30x48 CLEAR SPACE
	LINE OF FLOOR/ROOF ABOVE
	WHEELCHAIR CLEAR FLOOR SPACE
	SEMI-RECESSED FIRE EXTINGUISHER CABINET
	SURFACE MOUNTED *FIRE EXTINGUISHER
	BRACKET MOUNTED *FIRE EXTINGUISHER
	*FIRE EXTINGUISHER & KNOX BOX TO BE LOCATED PER FIRE MARSHALL
	O.F.O.I. FURNITURE, TYP.
	FLOOR DRAIN @ CONC. FLOOR PER 14/A5.06
	FLOOR DRAIN @ TILED FLOOR (DEPRESSED CONCRETE), SEE DETAIL 8/A5.06
	DRAIN ELEVATION NOTED IS THE TOP OF DRAIN - CENTER DRAIN IN AREA INDICATED, U.N.O. - SLOPE FLOOR TO DRAIN 1/8" / 1'-0" MIN., 1/4" / 1'-0" MAX.
	PH PANIC HARDWARE, SEE DOOR HARDWARE SCHEDULE
	1 HOUR FIRE BARRIER

CEILING PLAN LEGEND	
NOTE: NOT ALL TYPES MAY BE USED	
	SMOKE PARTITION, FULL HEIGHT TO DECK.
	CEILING ACCESS PANEL, 30"x30" UNO, SEE 8/A5.09
	CEILING HEIGHT (HEIGHTS INDICATED ARE RELATIVE TO 100'-0" FLOOR LEVEL).
	VIDEO CAMERA
	DAYLIGHT SENSOR
	OCCUPANCY SENSOR
	MOTION DETECTOR
	ALARM SIREN
	FIRE ALARM HORN
	FIRE ALARM STROBE
	LIGHT FIXTURES
	SUSPENDED LIGHT FIXTURES
	SUPPLY DIFFUSERS
	RETURN AIR REGISTER OR EXHAUST FAN
	EXIT LIGHT
	SMOKE DETECTOR
	HEAT DETECTOR
	INTERCOM
	PAGING SPEAKER
	INFRARED DETECTOR
	SPEAKER
	FIRE PROTECTION SPRINKLER
	EXHAUST FAN

CEILING TYPES	
C-1	SUSPENDED 5/8 GYPSUM BOARD, PAINTED, SEE 1/A5.09
C-2	EXPOSED METAL DECK, PAINTED

GENERAL RCP NOTES	
1.	GENERALLY CENTER CEILING GRIDS IN EACH ROOM TO PROVIDE EQUALLY SIZED PANELS ON OPPOSITE WALLS. IF PLANS INDICATE A GRID ALIGNING WITH A COLUMN, WALL, SOFFIT, ETC, START GRID AT THE INDICATED SURFACE. AVOID PANELS LESS THAN 12" IN WIDTH.
2.	SEE FINISH SCHEDULE FOR COLORS.
3.	ALL GYP BD CEILING AND SOFFITS TO BE PAINTED.
4.	ALL EXPOSED STEEL FRAMING AND DECK AT CEILINGS TO BE PAINTED.
5.	EXCEPT AT STORAGE, MECHANICAL AND ELECTRICAL UTILITY ROOMS PAINT ALL EXPOSED DUCTWORK, PIPING AND CONDUITS.
6.	CEILING HEIGHT TO BE MEASURED FROM FINISH FLOOR LEVEL OF THE ROOM OR THE AREA WHERE CEILING IS IN. CEILING HEIGHT ABOVE RAMP TO BE MEASURED FROM BOTTOM OF LOWEST LEVEL LANDING OF RAMP.

REVISIONS	
1	ADDENDUM 1
2	02/01/2022

THIS APPROVAL IS FOR ITEMS WITHIN CLOUDED AREAS ONLY. FOR OTHER INFORMATION NOT CONTAINED WITHIN CLOUDED AREAS, REFER TO ORIGINAL DSA APPROVED PLANS.
DO NOT USE THESE PLANS AS SUBSTITUTE FOR THE ORIGINAL DSA APPROVED PLANS.



NORWALK LA MIRADA UNIFIED SCHOOL DISTRICT
LA MIRADA HIGH SCHOOL NEW FOOTBALL STADIUM PROJECT
13520 ADELA DRIVE, LA MIRADA, CA 90638

DSA # 03-120551

NAC
ARCHITECTURE

NAC NO. 161-19015
DATE 02/01/2022

ADDENDUM 1

BUILDING W - PLAN / RCP

A3.11